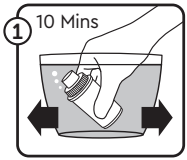




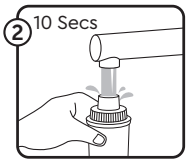
Fitting & usage instructions

PREPARING THE WATER FILTER CARTRIDGE

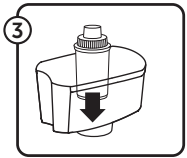
Remove all packaging from the filter cartridge. There may be a small residue of black carbon particles in the bag or on the surface of the cartridge; this is normal. These particles are harmless and are washed off during the preparation process.



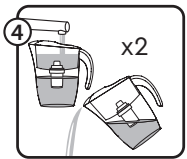
Soak the filter cartridge in a bowl of water for 5-10 minutes to remove all the air bubbles.



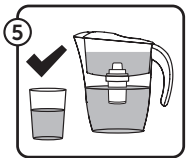
Rinse for 10 seconds under a running tap.



Place the filter cartridge in the inner vessel and press firmly down to ensure a tight seal.



Fill the inner vessel with cool water and let it pass through the filter. Once it has been filtered, discard the water. Repeat the procedure once more.



Fill the inner vessel for a third time, your water filter jug is now ready for use.

The filter lasts up to 170 litres which is about 4 weeks of normal use.

THIS UNIVERSAL FILTER FITS BRITA* CLASSIC, BOOTS** ORIGINAL, SAINSBURY'S[†] & OTHER CLASSIC JUGS NOT AQUA OPTIMA JUGS

The calendar months on the cartridge are only relevant to filter jugs with matching indicator marks on the inner vessel and should otherwise be ignored.

*Brita is a registered trademark of Brita GmbH
**Boots is a registered trademark of Boots UK Limited
†Sainsbury's is a registered trademark of J. Sainsbury PLC