

 **anti-bacteria**
water filter jug

AQUA  **OPTIMA**[™]
Purer Water Fast

Juno

Instructions for use



*Member,
Water Quality
Association*

www.aqua-optima.com

Aqua Optima is a brand of the Strix Group.
Head Office: Strix Ltd. Isle of Man,
British Isles, IM9 2RG



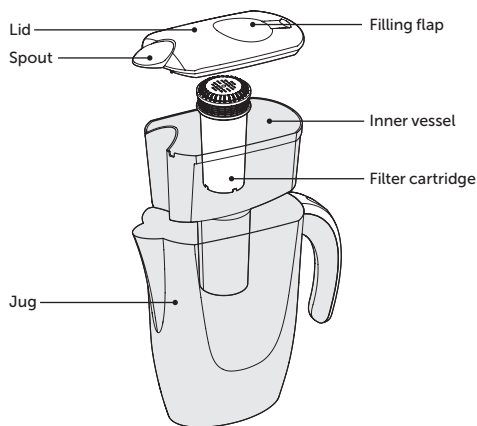
FREE

Filter Replacement
Reminder App

Scan to download. Available for



www.aqua-optima.com

EN**READ ALL INSTRUCTIONS BEFORE USE AND SAVE THEM FOR FUTURE REFERENCE****WARNING**

This product is intended to filter normal faucet water only. Do not put water of unknown quality or that has been microbiologically contaminated into the product.

BEFORE USING THE FILTER JUG FOR THE FIRST TIME

1. Remove all packaging from the pitcher.
2. Remove the lid from the pitcher. The lid should be wiped clean with a damp cloth.
3. Wash and rinse the inner vessel and jug.

PREPARING THE WATER FILTER CARTRIDGE

1. Remove the filter cartridge from its bag and handling the filter by the top only, peel off the sticker from the top of the filter cartridge. There may be a small residue of black carbon particles in the bag or adhering to the cartridge body; this is normal. These particles are harmless and are washed off during the preparation process.
2. Soak the cartridge in a bowl of water for 5 minutes to remove all air bubbles.
3. The filter cartridge is now ready for use.

FITTING THE FILTER INTO THE INNER VESSEL

1. To ensure a good fit for the filter cartridge check that the silicon ring is correctly located in its groove.
2. Place the filter cartridge in the inner vessel and press firmly down; the cartridge should stay in place if the inner vessel is turned upside down.
3. Fill the inner vessel with cold water and let us pass through the filter. Once it has been filtered, discard the water. Repeat the procedure once more.
4. Fill the inner vessel for a third time; your water filter jug is now ready for use.

FILTER CARTRIDGE LIFE INDICATOR

The filter cartridge life indicator on the lid will remind you when to change the filter cartridge and ensure optimum performance.

To ensure best performance, the filter cartridge should be changed after 80 gallons approximately 3 months (90 days) of normal use.

After you have fitted the filter cartridge set the indicator dial to 3 months ahead.

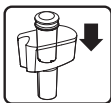
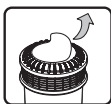
Every time you change the cartridge, reset the indicator again following the above instructions.

REPLACING THE FILTER CARTRIDGE

Prepare and insert the new filter cartridge as shown above.

FOR BEST RESULTS

- To prevent the filter from drying out, the water filter should not be left unused for long periods. If such an extended period is anticipated (such as a holiday), then it is best to remove the filter and store in a sealed plastic bag. The filter can then simply be prepared as per the original fitting instructions.
- Store the filter jug in the refrigerator or in a cool location. It is important to store the jug out of direct sunlight and away from heat sources.
- In the event of the filtered water not being used for more than 48 hours, we recommend that the water is discarded and the filter jug re-filled with fresh water.
- We recommend the inner vessel and jug body are washed and rinsed regularly. The lid should be wiped clean with a damp cloth as required.
- Use only cold or room temperature water for filtering.
- Do not apply concentrated cleaning agents such as heavy oxidants, bleach, or chlorinated solvents to any part of this product. Do not use abrasive pads on the product.
- Do not use the filter jug for any purpose other than filtered water.



Tested & certified by WQA against the NSF53 standard for material requirements & cyst reduction only when used in the AJ0xxx system.

Model number: AJ0xxx
 Rated service flow: 4 gpd
 Min & max operating temp: 40°- 86°F (5°-30°C)
 Replacement filter model number: ABSxxx

Systems certified for cyst reduction may be used on disinfected waters that may contain filterable cysts.

This system has been tested according to NSF/ANSI 53 for cyst reduction. The concentration of cysts in water entering the system was reduced to a concentration less than or equal to the permissible limit for water leaving the system, as specified in NSF/ANSI 53.

Substance	Influent challenge concentration (mg/L)	Reduction requirement
Cyst	Minimum 50,000/L	0.9995

While testing was performed under standard conditions, actual performance may vary.