

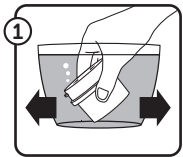


Fitting & usage instructions

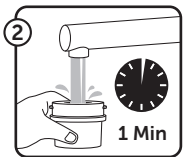
AQUA OPTIMA™
Purer water, fast

PREPARING THE WATER FILTER CARTRIDGE

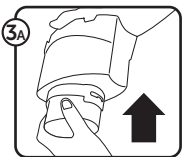
Remove all packaging from the filter cartridge. There may be a small residue of black carbon particles in the bag or on the surface of the cartridge; this is normal. These particles are harmless and are washed off during the preparation process.



1 Soak the filter cartridge in a bowl of water for 5–10 minutes to remove all the air bubbles.

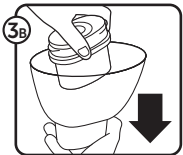


2 Rinse for 1 minute under a running tap.



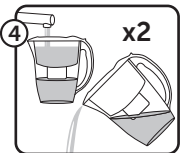
AQUA OPTIMA JUGS

Fit the Aqua Optima Evolve filter cartridge into the underside of the inner vessel and rotate clockwise to lock into place. Ensure that it is firmly secured.



BRITA* MAXTRA* JUGS

Fit the Aqua Optima Evolve filter cartridge into the top of the inner vessel and push down into place. Ensure that it is firmly secured. (*Brita & Maxtra are registered trademarks of Brita GmbH)



4 Fill the inner vessel with cool water and let it pass through the filter. Once it has been filtered, discard the water. Repeat the procedure once more.



5 Fill the inner vessel for a third time, your water filter jug is now ready for use.

Aqua Optima up to 30-DAY Filter Cartridge

To ensure the best performance, the filter cartridge should be changed after 100 litres, which is approximately 4 weeks of typical use.

Aqua Optima up to 60-DAY Filter Cartridge

To ensure the best performance, the filter cartridge should be changed after 200 litres, which is approximately 8 weeks of typical use.

How long does a cartridge last

We are aware that there are some parts of the UK in which the water is extremely hard (limescale forms in kettle) and this will exhaust the filter more quickly. As the filter also targets heavy metals such as lead or copper, any significant amount of these metals in the plumbing system may also contribute to the filter exhausting earlier.